

Corners to be Indexed

W1/4 COR. SEC. 13-108-42
E1/4 COR. SEC. 14-108-42
SW COR. SEC. 13-108-42
NE COR. SEC. 23-108-42

JAN 24 2022

Karen Brown

I hereby certify that this document and the data contained herein was prepared by me or under my direct supervision.

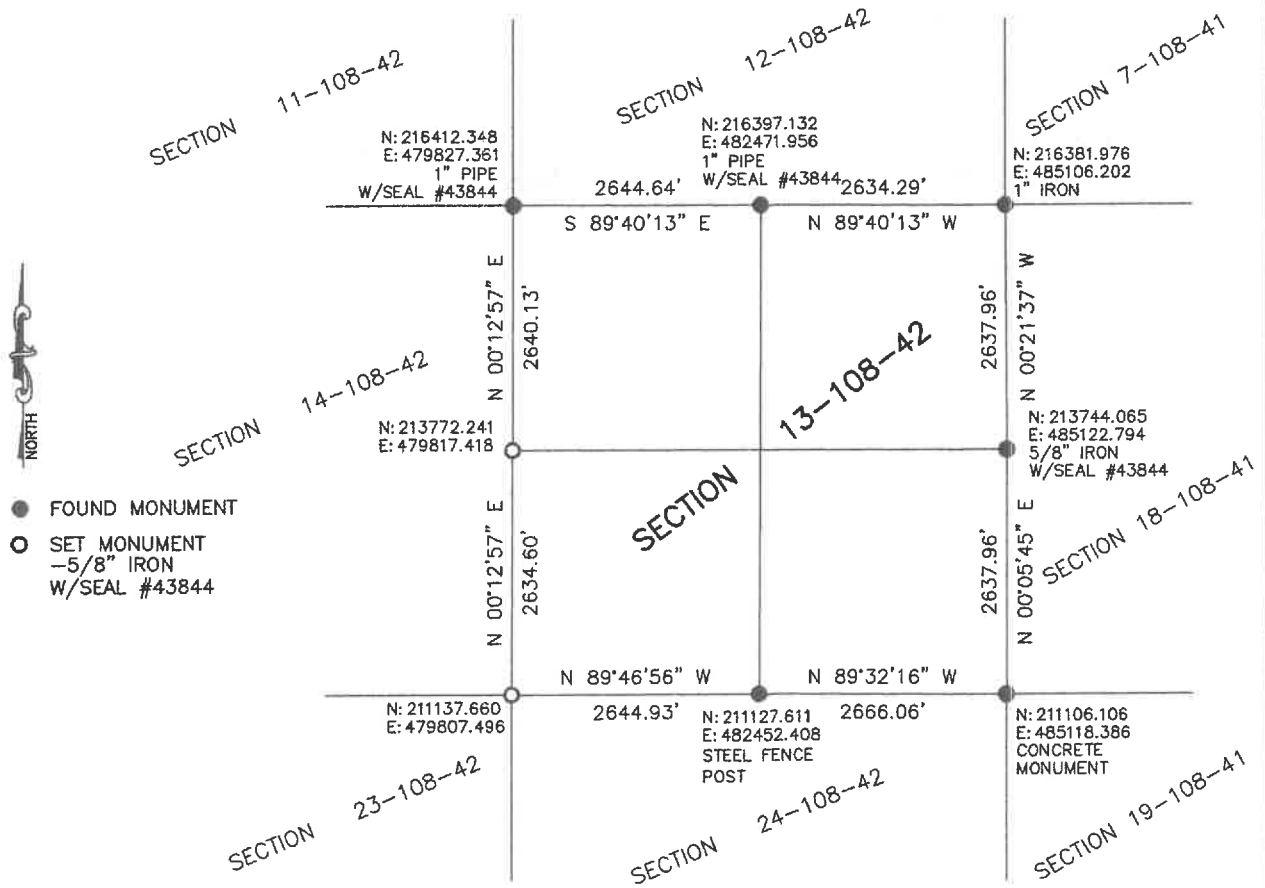
[Signature]

1/20/2022
Date

Daniel L. Bueltel
License No. 43844

CERTIFICATE OF LOCATION OF GOVERNMENT CORNER

Land survey monuments situated in Section 13, Township 108, Range 42, 5TH P.M.
STATE OF MINNESOTA, County of MURRAY



Murray County Coordinate System (1996 Adj.)

Statement of Evidence: SECTION 13-108-42

W1/4 COR. SEC. 13-108-42 (E1/4 COR. 14-108-42)

On June 1, 1951 a stone marked with an "X" in the top was placed at the corner.

(No Date) County plans show a stone marked with an "X" on top at the corner.

On December 12, 2021 Bueltel-Moseng Land Surveying was unable to dig for stone due to county tile running in the road. Set 5/8" iron with seal #43844 using stationing from county plans. Corner is in the center line of road and in line with occupation line to the west.

SW COR. SEC. 13-108-42 (NE COR. 23-108-42)

On June 1, 1951 a 6" round concrete monument marked with an "X" was placed at the corner.

On August 11, 1981 a concrete monument was located 2'± below the road surface. Steel fence post set above monument.

On August 11, 2015, Murray County Highway Department found a steel fence post.
N: 211137.66
E:479807.496 (1996 Adj.)

On December 12, 2021 Bueltel-Moseng Land Surveying found nothing at the corner. Set a 5/8" iron with seal #43844 recorded coordinates from 2015.